

# WHELEN®



Officially Licensed Warning  
Lights of NASCAR®

# Lightbars

## Sirens, Speakers & Switch Controls



# WHELEN® Justice® Series Lightbars

High performance, cost competitive Super-LED® lightbar with a wide range of options, designed for ease of operation, upgrade and serviceability. Available in Competitor™ Series and programmable WeCan® Series.



## JC/JE Series Competitor™

Front, rear and all bar operation control, optional Scan-Lock™ flash pattern control and pattern override feature, optional 15° horizontal adjustable LR11 Super-LED flashing take-downs and alley lights and optional Traffic Advisor™ with control head.

## JV/JY Series **WE CAN** Programmable

Built-in Traffic Advisor™ control, independent flash pattern and phase control of each individual lighthead, optional 15° horizontal adjustable LR11 Super-LED flashing take-downs and alley lights. WeCan® Electronic Control Module (ECM) communicates all lightbar operating functions via a 2 conductor, 20 gauge cable. All functions are programmed easily by your computer via simple "pick & click, or drag" screens. Windows® based 2000, XP or later operating system required. USB input to the ECM from PC or laptop makes programming easy.

## All Justice Lightbars Feature

- Twelve inches wide and only 2-1/4" high (without mounting feet).
- Three standard lengths 44", 50", 56" plus a 62" Wrecker Bar.
- Black polycarbonate base on an extruded aluminum platform for added strength.
- Corner modules available with 6 or 9 diode Super-LED lightheads.
- Clear outer lens standard with a moisture resistant compression fit gasket. Optional color lenses available.
- Optional LIN6™ or CON3™ lighthead modules. CON3 has removable optic spreading filters for outer sections.
- Center section available with optional single LIN6, CON3 or two LTR3s (for split color center section).
- Optional Solar Panel compensates for parasitic draw from the vehicle's computer, improves battery efficiency and extends battery life.
- Optional external high intensity flashing LED alley light pod and LR11 warning light in alley position (JV/JY Series only).
- Optional external LED warning light pod available (JV/JY Series only).
- Optional GTT Opticom™ emitter, LED brake/tail/turns and Traffic Advisors available.
- Standard passenger side cable, driver side optional.
- Service oriented. Change colors, upgrade or service lightbar in the field.
- Simply remove four screws to access any section of the lightbar.
- Replace any lighthead by removing one screw and single connector.
- Wrecker lightbar, standard 62" Competitor™ Series model with rear LED work lights and LED brake/tail/turn lights.
- Five year HDP® Heavy-Duty Professional warranty on LEDs.
- Size: 2-1/4" (64mm) H x 12" (304mm) W x 44" (112cm) or 50" (127cm) or 56" (142cm) L.



Standard CON3 light modules with optic spreading filters.



Optional external high intensity flashing LED alley light pod and LR11 Super-LED warning light in alley position.



Optional high intensity LED flashing take-downs/work lights.



Optional LTR3 modules.



Optional LR11 Super-LED flashing alley light.



Optional LR11 Super-LED flashing take-down.



Optional solar panel compensates for parasitic draw.

For Product Models, Options & Specifications....see page 15

To help you build your Lightbar,  
Whelen "WeCad" build-a-bar program is available on our Website at:  
[www.whelen.com](http://www.whelen.com)

# WHELEN® LFL Liberty™ Super-LED® Series Lightbars

The only Patented Linear-LED® Module On the Market Today



Maximum heads-up warning in an extreme low profile lightbar with brighter extended corner modules for more light at critical 45° and 90° angles.



SCANLOCK

We put together all the latest technology, all the super performance, high reliability features needed to give you maximum, heads up warning in an extreme low profile lightbar that's almost undetectable on the highways. All LFL lightbars are made for the rough treatment and long hours that your job demands. From the extruded aluminum chassis on up, every component is designed and field-tested for performance under just these conditions.

## All Liberty Lightbars Feature

- Ultra bright, ultra wide-angle Linear-LED® technology.
- Choose the basic four Linear Super-LED extended corner model, then add up to 12 Linear Super-LED directional modules, for a total of 16 modules.
- Sleek, aerodynamic profile, state-of-the-art optics.
- Extruded aluminum chassis provides superb strength and stability.
- Slightly wider footprint provides greater stability and weight distribution on the thinner roof construction of today's vehicles.
- All LED modules feature new wide-angle design for increased performance.
- Buy a base bar and add pairs of Linear-LED modules at any time in the future at the distributor or end user level.
- Clear outer lenses are standard, optional color lenses are available.
- 5 year HDP® (Heavy-Duty Professional) warranty on LEDs.
- All models exceed SAE requirements.
- Popular options include: 500 Series halogen take-downs, MR11 take-downs with 15° horizontal adjustment, MR11 halogen alley lights with 15° horizontal adjustment, LR11 Super-LED take-down and alleys or LR11 warning in alley light position with 15° horizontal adjustment, Solar Panel which compensates for parasitic draw, GTT Opticom™ emitter, super high intensity take-downs or work lights, remote strobe and Linear-LED center options and a variety of 5 or 6 lamp Linear-LED Traffic Advisors.
- Size: 2-1/2" (64mm) H by three standard lengths, 43-1/8" (109cm), 48-1/2" (123cm) or 53-7/8" (137cm).

## SX Series

Liberty SX features extended Super-LED corner modules which expands visibility to critical 90° angles.

- Optional five or six LED Traffic Advisor™ with ultra high intensity Linear Super-LED modules or, five or six lamp split Traffic Advisor with passenger side warning alternates with driver side warning.
- Each Super-LED lighthouse is driven by an all electronic module that provides proper input power and choice of flash patterns.
- Scan-Lock™ allows you to scan through multiple flash patterns and lock in the desired pattern. Every pair of lights can have its own unique pattern.
- Low "LC" current operation uses a small diameter external cable harness for operation with standard, or low current switch controls or micro switches.
- Pre-wired with 15' passenger side cable exit, optional driver side cable exit.
- Cruise light control with 3 intensity levels to choose from.
- Customer installed upgrade kits to convert SL version to SX are available.
- Build your lightbar in any color combination with take-downs and LED modules in any position you want.

## SW Series **WE CAN** Programmable

Similar to the SX Series but includes an external interface unit, the WeCan® Electronic Control Module (ECM), which communicates all lightbar operating functions via a 2 conductor, 20 gauge cable. All functions are programmed via simple "pick & click, or drag" screens. Windows® based 2000, XP or later operating system required. USB input to the ECM from PC or laptop makes programming easy.

- Small cable allows for easier overall wiring and lightbar installation.
- Up to 18 different programmed warning configurations can be operated via customer-supplied switching to each of the 18 input wires to the ECM (default program pre-installed). Once the ECM is programmed, selection of these wires will allow for:
  - Complete independent "On" or "Off" control of each lighthouse.
  - Flash pattern control of each lighthouse.
  - Phase control of each lighthouse, with four phases that allow for alternating, simultaneous & combo flash patterns.
  - Cruise light control with multiple adjustable intensity levels.
  - Independent Hi/Low control is available to any one or more Super-LED lighthouses, excluding the four corner modules (required for SAE certification).
  - Independent sequential (single wire or 2-wire) control of the traffic arrow functions (left, right, split) does not require a Traffic Advisor control head.



Liberty's extended corner modules provide added coverage to critical 45° and 90° angles.



Optional LR11 Super-LED flashing take-down light.



Optional MR11 halogen alley light.



Optional super high intensity LED work or take-down light.



Optional LR11 Super-LED flashing alley light.



Optional solar panel compensates for parasitic draw.



For Product Models, Options & Specifications....see page 15

# WHELEN® Edge® Ultra Freedom™ Super-LED® Lightbars



Ultra Freedom with optional halogen take-downs



Start with four Linear-LED® modules and add up to twelve more for a total of sixteen Linear-LED modules in the combination you need.



Ultra Freedom with optional Linear Super-LED Traffic Advisor

An all Linear-LED lightbar featuring the next generation of ultra bright, ultra wide-angle Super-LED technology, in a warning package that rivals strobe in impact, but provides heavy-duty, long life operation with low current draw. Now available in two styles, the FL version with four standard corner Super-LED modules, and the FX version with four extended Super-LED corner modules which expands visibility to critical 90° angles. All Ultra lightbars have the same modular construction and are made for rough treatment and long hours.

## All Freedom Lightbars Feature

- All models meet or exceed SAE Class 1 and California Title XIII requirements.
- Build your lightbar in any color combination with take-downs and Super-LED modules in any position you want.
- Optional Solar Panel compensates for parasitic draw.
- Optional dual LR11 flashing Super-LED take-downs and alley lights with 15° horizontal adjustment.
- Clear outer lenses are standard, with optional color lenses.
- Five year HDP® (Heavy-Duty Professional) warranty on LEDs.
- Standard lengths: 44", 50", 55".
- Size: 3-3/4" (95mm) H x 12" (304mm) W x 44-3/8" (113cm) or 49-3/4" (126cm) or 55-1/8" (140cm) L.

## FL/FX Series

- Choose the "FL" standard corner Linear Super-LED or "FX" extended corner module with 50% more light energy, then add up to twelve Linear Super-LED directional modules for a total of sixteen Super-LED modules.
- Optional halogen or Super-LED flashing take-downs, flashing alley lights and five or six ultra high intensity Linear Super-LED module Traffic Advisor.
- Each Super-LED lighthouse is driven by an all electronic module that provides proper input power and choice of flash patterns.
- Cruise light control with 3 intensity levels to choose from.
- Scan-Lock™ allows you to scan through multiple flash patterns and lock in the desired pattern. Every pair of lights can have its own unique pattern.

## FV/FW Series **WE CAN** Programmable

Similar to the FL & FX Series but includes an external interface unit, the WeCan electronic control module (ECM), which communicates all lightbar operating functions via a 2 conductor, 20 gauge cable. All functions are programmed via simple "pick & click, or drag" screens. Windows® based 2000, XP or later operating system required. USB input to the ECM from PC or laptop makes programming easy.

- The FV Series has four standard length Linear-LED corner modules with 400 Series or MR16 halogen alley light options.
- The FW Series has four extended length Linear-LED corner modules with MR11 or dual LR11 Super-LED alley light options.
- Small cable allows for easier overall wiring and lightbar installation.
- Up to 18 different programmed warning configurations can be operated via customer-supplied switching to each of the 18 input wires to the ECM (default program pre-installed). Once the ECM is programmed, selection of these wires will allow for:
  - Complete independent "On" or "Off" control of each lighthouse.
  - Flash pattern control of each lighthouse.
  - Phase control of each lighthouse, with four phases that allow for alternating, simultaneous & combo flash patterns.
  - Cruise light control with multiple adjustable intensity levels.
  - Independent Hi/Low control is available to any one or more Super-LED lighthouses, excluding the four corner modules (required for SAE certification).
  - Independent sequential (single wire or 2-wire) control of the traffic arrow functions (left, right, split) does not require a Traffic Advisor™ control head.



## Ultra Freedom II Series

### FC Series **WE CAN** Programmable

- The Ultra Freedom II "FC" Series has all the great features of the FW lightbars with the extended corner modules plus independent control of upper and lower levels of each lighthouse.
- Whether you choose solid color or split color modules, you have independent control of each module, upper and lower level, for virtually two lightbars in one.



Freedom FX provides added coverage to critical 90° angles. Shown with optional MR11 flashing alley lights.



Freedom FL with 400 Series alley light option.



Optional dual LR11 Super-LED flashing take-down



Optional solar panel compensates for parasitic draw.



Freedom FX shown with dual LR11 flashing alley light option.



Optional MR16 halogen flashing take-down

For Product Models, Options & Specifications...see page 16

# WHELEN® Edge® 9M Series Strobe Lightbars

Built on the classic Edge 9000 extruded aluminum I-Beam chassis, the 9M Series is a highly effective, user friendly and cost efficient addition to the Edge family.



Edge 9M with 10 strobes and optional LED flasher, halogen take-downs and alley lights.



Side view showing strap kit and optional halogen alley light.



Four strobe model with optional halogen flashers.



Rear view showing optional LED Traffic Advisor™



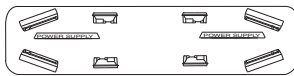
9M14



9M14-F



9M26



9M28



9M30



9M32

## SCANLOCK™

- Classic Edge proportions with straightforward, modular construction for changes, upgrades or service.
- Models include 4, 6, 8, 10, or 12 strobe lighthoods plus up to ten secondary warning, halogen or LED modules.
- Modular design. All inboard lamp modules and slide-in lenses are of equal size and can be placed anywhere in the lightbar.
- End caps with clear lenses and color inner filters allow individual color selection. Color filters are also available for duplex light modules.
- Available with optional Scan-Lock™ flash pattern control that lets you toggle through ten strobe, five halogen and LED flash patterns and lock in the pattern you select. Selected pattern is stored in non-volatile memory until you decide to change it.
- Scan-Lock allows each power supply and each flasher board to be programmed in a different pattern.
- Select up to 3 power supplies (12 strobes max.) and 2 flasher boards (8 halogen flashers) per lightbar.
- Each flasher runs up to 4 lighthoods and includes steady-burn override for one pair of lights to be used for flashing take-downs, etc.
- Optional built-in Traffic Advisor™ in strobe, halogen or LED.
- Three standard lengths: 44", 50" and 55".
- Contact factory for custom lengths.
- Pre-wired with passenger side exiting 15' external cable harness. Includes two (8 gauge) power cables to go to the battery, and sixteen low power (22 gauge) function wires for connection to the customer supplied switch control. These low power function wires need less than 1/2 amp to operate, allows for simple operational independence of each lightbar control function, and makes wiring a snap! Optional driver side cable exit with 25' power cable available.
- All models meet or exceed SAE Class 1 and California Title XIII requirements.
- Size: 3-3/4" (95mm) H x 10" (254mm) W x 44-1/8" (112cm), 49-3/4" (126cm) and 55-1/8" (140cm) L.

### The 9M Lightbar offers modular design for ease of upgrade and service.



All inboard lighthouse modules are same size and can be placed anywhere in the lightbar.



End strobe modules slide in channels of the extruded aluminum housing.



Mate-N-Lok® connectors snap together for easy lighthouse replacement or additions.



Lighthouse modules snap-in for a tight secure fit.

For Product Models, Options & Specifications....see page 17



LED Flasher



Halogen Flasher



Halogen Take-Down



Dual Alley Light

To help you build your Lightbar, Whelen "WeCad" build-a-bar program is available on our Website at:

[www.whelen.com](http://www.whelen.com)

# WHELEN® Inner Edge® Super-LED® Series

Forward & rear facing undercover lighting systems that are virtually undetectable when not in use. Choose the housing to fit your vehicle and the number and style of light modules needed.



Low profile Upper Front 3-LED

Super bright 3-LED or Linear-LED® modules mounted in a rugged housing that fits snugly against the upper front windshield or upper or lower back window of late model Ford Crown Victoria, Explorer, Expedition and F150/250/350; Chevy Impala, Suburban, Tahoe, Silverado; Dodge Charger, Magnum, Durango and Chrysler Aspen police vehicles.

- Full-featured interior lightbar that is virtually undetectable when not in operation.
- Super-LEDs are low current, vibration and moisture resistant.
- Requires customer supplied switches or control head, purchased separately.
- Easy installation. Front facing models mount to visor anchor points and rear lower facing uses the existing child-restraint brackets, both without drilling holes.
- Available in four safety colors.
- Scan-Lock™ provides multiple flash patterns.
- New Super-LED take-down lights on most front facing full size lightbars.
- Five-year warranty on LEDs.

## Forward Facing Upper Three Light Inner Edge Series

Three super bright Linear-LED® modules in a smaller housing that fits snugly against the upper front windshield of late model Ford Crown Victoria police vehicles.

- Models available with single color or split color center mounted Super-LED, clear center mounted remote strobe or two center mounted MR8 take-down lights.
- Meets SAE and California Title XIII specifications.

## Forward Facing Upper Low Profile 3-LED Series

- Low profile with two piece housings. Available as sets with individual driver and passenger side units or as a single passenger side unit with a combination of TIR3™ and LIN3™ lightheads. Each section houses either five lightheads or four lightheads and one Super-LED flashing take-down.
- Extra TIR3 and LIN3 lenses are supplied for customization of light dispersion.
- One piece unit with ten or twelve 3-LEDs and Super-LED take-downs for the Ford Crown Victoria.
- Meets SAE and California Title XIII specifications.

## Rear Facing Upper TIR3 Series

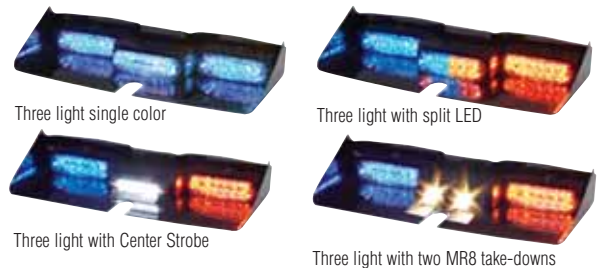
- Choose from four configurations with eight or ten TIR3 Super-LEDs.
  - Eight or ten lamp warning or Traffic Advisor™, field programmable.
  - Eight lamp unit with a six lamp Traffic Advisor and two end flashers.
  - Ten lamp unit with an eight lamp Traffic Advisor and two end flashers.
  - Ten lamp unit with a six lamp Traffic Advisor and two end flashers.
- Meets SAE specifications.

## Rear Facing Upper Linear-LED Models

- Eight programmable modules for warning or Traffic Advisor operation.
- Six lamp Traffic Advisor with two end flashers.
- Meets SAE specifications.

## Rear Facing Lower Linear-LED Series

- Six or eight modules for warning or Traffic Advisor operation or six lamp Traffic Advisor with two end flashers.



Three light single color

Three light with split LED

Three light with Center Strobe

Three light with two MR8 take-downs



Two piece 3-LED

One piece 3-LED, passenger side.



Upper Rear TIR3

Upper Rear Linear-LED Traffic Advisor



Rear lower eight lamp Linear-LED



Inner Edge's unlit stealth appearance.



Visible only when lighting is activated.



Secures up & away against windshield.



Three light split Linear-LED.



Lower rear Linear-LED.



For more information please request Inner Edge brochure.

For Product Models & Specifications....see page 18

# WHELEN® Outer Edge® - Exterior Rear Lightbar for Chevy Tahoe

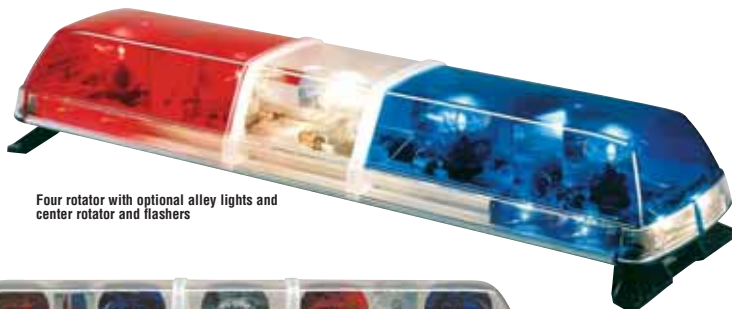
*Two independent housings with LINZ6™ modules designed to work together as a lighting system. Custom molded to mount outside of the upper rear window of the 2008-10 Tahoe. Designed for reliable, long-life service under the toughest conditions.*



Two versions available, one with eight lamps designated for warning or Traffic Advisor™ applications, or eight lamps total, with six lamp Traffic Advisor and two end flashing lamps. Custom designed for 2008-10 Chevy Tahoe.

- Two rugged rear facing vacuum formed ABS housings, each with four LINZ6 Super-LED® lightheads for exterior mounting.
- Clear, non-fluted lenses are sealed to the base for thermal heat management.
- Fully encapsulated for moisture and vibration resistance.
- Features seven Scan-Lock™ flash patterns for flashing mode plus Traffic Advisor sequence.
- Flash Patterns: SignalAlert™ 75, CometFlash® 75, SingleFlash 75, 150, 375, ActionFlash™ & ActionScan™.
- Traffic Advisor allows four Scan-Lock patterns: sequence to solid, sequence on/sequence off, one lamp to TripleFlash™, and two lamps to TripleFlash.
- Mounts to body and back window with 3M® VHB 2 sided tape, included.
- Available in four safety colors: red, blue, amber, and white.
- Standard interconnect harness connects right and left side housings and a 20' power cable.
- Customer supplied switches or optional Whelen TADCTL1 Traffic Advisor™ control head to operate all lightbar functions.
- 5 year warranty on LEDs.
- Size: 5-5/8" (143mm) H x 3-3/4" (92mm) D x 19-1/4" (489mm) L, each.

## Centurion™ Series Lightbars



Four rotator with optional alley lights and center rotator and flashers

*Larger profile, bi-level lightbar with halogen rotators in upper level. Lower level accommodates take-downs, flashers, alley lights, brake lights and Traffic Advisor™.*



Four rotator with optional inner color filters, center rotator and take-downs.

A bigger, bolder, brighter rotating halogen lightbar ideally suited for police vehicles. Rugged Centurion lightbars are sized to hold a wide range of factory or customer installed options including a 123 dB speaker, halogen flashers and more. It's easy to install, easy to maintain, and features "shock mount" rotator plate design to isolate motor and gear noise for surprisingly quiet performance. Build the Centurion that meets all your requirements ... now and down the road!

**Centurion™**



Twin Duplex Alley Light

- Two speed motors: 135 RPM outboard; 135 or 175 RPM inboard with a double ball bearing motor assembly.
- Snap-in 50 watt halogen lamps.
- Extruded aluminum base never warps or sags.
- Captive tongue and groove design secures dome to base with added moisture resistance.
- Parts change easily using only a screwdriver.
- Mounting foot kit provides a wider foot print for greater stability.
- Sizes include 48", 52", 60", and 72" lengths.
- Models include solid color domes with clear lower level lens and clear lens dividers.
- Pre-wired with 15' driver side exit. Optional passenger cable exit available.
- Exceeds SAE and California Title XIII requirements.
- A wide range of options, which can be factory installed or easily added later by the customer.
- Size: 6-3/8" (161mm) H x 12" (304mm) W x 48" (122cm), 52" (132cm), 60" (152cm) or 72" (183cm) L.

**For Product Models, Options & Specifications....see page 17**

# WHELEN® Strobe and Super-LED® Mini Lightbars

*Small versions of our full size lightbars are useful for vehicles where space is at a premium or where, due to the size of the vehicle, the use of two mini lightbars offers a strategic benefit over the use of a single lightbar.*

## Mini Edge® 9M Strobe Mini Lightbar

Compact 28-1/4" size is ideal for single mounting or in pairs where room does not permit a full size lightbar. Four strobe models in permanent or magnetic mounting. Permanent mount models are available with optional take-down lights and alley lights and optional Scan-Lock™ providing ten selectable flash patterns.

Size: 3-3/4" (95mm) H x 10" (254mm) W x or 28-1/4" (717mm) L.



9M Mini Edge with optional take-downs and alley lights

## Mini Liberty™ Super-LED® Mini Lightbar

The next generation, all Linear-LED® technology that rivals strobe in impact in a sleek aerodynamic profile. LED design provides heavy-duty, long life operation with low current draw in a package that is only 2-1/2" high and 22" in length. Available in magnetic or permanent mount with an optional take-down or two alley lights (permanent mount only). Clear outer slide-in lenses and snap-in/lock-in lamp modules.

Size: 2-1/2" (64mm) H x 12" (304mm) W x 22" (558mm) L.



Mini Liberty, magnetic mount

## Mini Edge Ultra Freedom™ Super-LED Mini Lightbar

Proven Edge lightbar design in a smaller size, 28-1/4" long, with four high-intensity Linear Super-LED modules that provide strobe impact with rugged, low current LED performance. Heavy-duty extruded aluminum I-beam chassis, easy access to internal components using only a screw driver. Optional take-downs, alley lights, and two or four Linear inboard Super-LED modules are available.

Size: 3-3/4" (95mm) H x 12" (304mm) W x 28-1/4" (717mm) L.



Mini Freedom with two optional 400 Series Linear-LED lights

## Mini Justice® Super-LED Mini Lightbar

Our lowest profile lightbar with a height of only 2-1/4" and 23" long. Four Linear-LED corner modules. Optional LR11 high intensity Super-LED take-down and alley lights, and CON3™ or LTR3™ warning lights. Add up to 4 optional inboard lighthead modules. Black polycarbonate base on an extruded aluminum platform for added strength. Clear outer lens standard with a moisture resistant compression fit gasket. Optional color lenses available.

Size: 2-1/4" (57mm) H x 12" (304mm) W x 23" (584mm) L.



Mini Justice with optional CON3 modules and magnetic mount

**WARNING:** The use of any magnetic and/or magnetic suction mounted light on the outside of a moving vehicle is not recommended and is at the sole risk of the user.

# WHELEN® Guardian™ Series Mini Lightbars

From low profile Responder® LP Series to the Higher Profile Guardian Series, and three mounting options, Whelen has a mini lightbar for you.

## Available in Halogen and Strobe

Mounting options are permanent, magnetic and magnetic/suction. Halogen and strobe versions feature multi-color configurations with clear and color outer domes, inner color filters plus clear and color inner domes. Three year warranty on rotators, two year warranty on strobe power supply and 6 month warranty on strobe flash tube. Size: 5-7/8" (150mm) H x 7" (178mm) D x 17-5/16" (440mm) L.

- G1 Series:** Halogen, diamond mirror, 135 PRM rotators, 540 FPM total.
- G2 Series:** Halogen, diamond mirror, 175 PRM rotators, 700 FPM total.
- G5 Series:** Strobe, two Class 1 self-contained beacons with 1/2 diamond mirror.
- G7 Series:** Strobe, two remote strobe heads, built-in high intensity remote 40 watt output power supply and diamond mirror.



G1, G2, halogen, magnetic mount

G5, G7, strobe, permanent mount

For Product Models & Specifications....see page 19

# WHELEN® Responder® Series Mini Lightbars

## Responder LP Low Profile Super-LED® Mini Lightbar

Low-profile, mini lightbar with choice of LIN6™ or CON3™ Super-LED modules which provides 360° of high impact warning coverage and is only 3" in height. Lightbars have a built-in flasher to provide multiple Scan-Lock™ patterns including steady-burn. Available in either a rugged aluminum or polycarbonate base with a polycarbonate dome that features self-cleaning smooth outer dome with inner optics. Magnetic, magnetic/suction or permanent mount. Size: 3" (76mm) H x 6-1/4" (159mm) W x 17" (431mm) L.



Linear Responder LP aluminum base

CON3 Responder LP polycarbonate base

R2HD, dual halogen magnetic mount

## Responder HD Halogen Mini Lightbars

Two rotating halogen lamps, with a rugged aluminum base plate for shock and vibration resistance for reliable long-life operation. Redesigned 135 RPM motor assembly. Rugged construction for heavy-duty applications. Permanent or magnetic mount. Optional color filter kit. Three year warranty on motor assembly. Size: 5-1/8" (130mm) H x 6-5/16" (160mm) W x 17-1/4" (438mm) L.

## Responder HD Super-LED Mini Lightbars

Super-LED dual level modules with built-in electronic flasher and 12 Scan-Lock flash patterns. Heavy-duty rugged aluminum base available in permanent, magnetic and magnetic/suction mount models. SignalAlert™ flash pattern standard in magnetic and magnetic/suction mount models. Low current operation. Five year warranty on LEDs. Size: 5-1/8" (130mm) H x 6-5/16" (160mm) W x 17-1/4" (438mm) L.



R10HD, dual level Super-LED, permanent mount

R6DX, dual strobe, permanent mount

## Responder DX Strobe Mini Lightbars

Two 360° strobe beacons with diamond mirror and built-in power supply. ActionFlash™ default flash pattern with 10 Scan-Lock™ flash patterns available. Polycarbonate base and outer dome. Permanent mount with 6" pigtailed, magnetic mount includes four 50 lb. pull magnets with cigar lighter plug. Size: 4-3/4" (120mm) H x 6-5/16" (160mm) W x 17-1/4" (438mm) L.



For Product Models & Specifications....see page 19

WARNING: The use of any magnetic and/or magnetic suction mounted light on the outside of a moving vehicle is not recommended and is at the sole risk of the user.

# WHELEN® 295 Series Siren Amplifiers

*Keep both hands on the wheel, both eyes on the road, and you're still in full control of emergency warning with Whelen Electronic Sirens. Scan-Lock™ siren tone feature now available on many models.*

In "Hands-Free" mode, 295SL, 295SLS and 295HFS Series sirens will be in "standby" mode awaiting instructions. You can turn the siren on, activate Wail, Yelp or Piercer tones and turn the unit off from the horn ring. No more eyes off the road while fumbling for the siren controls with one hand! 295SLS and 295HFS Series amplifiers are microprocessor controlled and rated for 100 or 200 watt output. The 295HF100, is rated for one or two 100 watt speakers. Standard features include Radio Rebroadcast, Public Address, Manual, Wail, Yelp, Airhorn, and Piercer tones. PTT (Push To Talk) switch on unidirectional microphone over-rides all siren functions. Contemporary styling complements most Whelen power controls and Traffic Advisor™ control consoles for proper aesthetic stacking. An adjustable bail bracket allows mounting in a variety of positions. Each model is mounted on a slide out chassis with an integral quick disconnect plug for ease of maintenance or replacement.

- 295HFS and 295SLS Siren Series features six functions, plus radio repeat and public address.
- Combination on/off and horn ring transfer switch.
- Adjustable microphone and radio repeat volume controls.
- 295HFS45 and 295SLSA1 has "Park-Kill" plus a time-out relay for shotgun lock, trunk lock, etc.
- Adjustable intensity backlighting in soft LED non-glare green, bulb used on 295SL100.
- Solid-state over/under voltage shutdown and output short circuit protection.
- Input polarity protection.
- External spade-type fuse.
- 295HFS and 295SLS Siren Series features SI TEST® silent self-diagnostic test, eliminating the need for annoying siren "blasts" during vehicle inspections or shift changes. Only Whelen offers this "silent" testing, day or night.
- Adjustable bail bracket allows mounting of unit in a variety of positions.
- Activate siren tones via "Aux. Enable" input (slide switch, power controls, or relay-to-ground connection).
- Meets/exceeds Class A requirements of SAE, AMECA, KKK1822 and California Title XIII specifications.



## Electronic Scan-Lock Siren Amplifier

### MODEL 295SLSA1

- Volume control knob on faceplate standard.
- Selectable 100 or 200 watt output, standard.
- Hands free operation plus 17 Scan-Lock siren tones.
- 5 year warranty on amplifier.
- 12 VDC.
- Dimensions: Height 2-1/2" (63mm) H x 6" (152mm) W x 7" (178mm) D.

**MODEL 295SLSA1:** 12 VDC, Hard-wired microphone



## Electronic Remote Siren Amplifier

### MODEL 295HFS2

- Flush mount control head.
- Selectable 100 or 200 watt output.
- Interconnection between control head and remote amplifier is via three small, #18 gauge wires. All other connections are to the remote amplifier 12-pin plug.
- 5 year warranty on amplifier.
- Size, Control Head: 2-7/8" (73mm) H x 6-1/4" (159mm) W x 2-3/8" (60mm) D. Amplifier: 2-3/8" (60mm) H x 6" (152mm) W x 7" (178mm) D.

**MODEL 295HFS2X:** Same as above but with dual amplifiers, meets California Title 13 requirements.

### OPTION

**MODEL 295HFSDA:** Second amplifier kit for dual amplifier use (except 295HFS2X)



## Electronic Remote Siren Amplifier

### MODEL 295HFS3

- Surface or under-dash mount control head.
- Interconnection between control head and remote amplifier via three small, #18 gauge wires. All other connections are to the remote amplifier 12-pin plug.
- 5 year warranty on amplifier.
- Size: Control Head: 2" (51mm) H x 6" (152mm) W x 2-3/8" (60mm) D. Amplifier: 2-3/8" (60mm) H x 6" (152mm) W x 7" (178mm) D.

### OPTION

#### MODEL 295HFSDA

Second amplifier kit for dual siren amplifier use.



## Electronic Remote Siren Amplifier

### MODEL 295HFS4

- Surface or under-dash mount control head.
- Directly compatible with Whelen "LC" Low Current and WeCan™ Series lightbars.
- Compatible with other lightbars and warning devices via a solid-state switching module or relays.
- Four position slide switch, five push-on/push-off switches & one momentary switch.
- Slide switch controls three separate primary warning light functions and can be wired to turn siren on in "full pursuit" mode.
- Push-button switches control secondary functions.
- Each slide switch position and push button switch has a colored LED for operating status display.
- Choice of 36 press-on legend tabs.
- Interconnection between control head and remote amplifier is via three small, #18 gauge wires. All other connections are to the remote amplifier 12-pin plug.
- 5 year warranty on amplifier.
- Size: Control Head: 3-3/8" (86mm) H x 6" (152mm) W x 2-3/8" (60mm) D. Amplifier: 2-3/8" (60mm) H x 6" (152mm) W x 7" (178mm) D.

### OPTION

#### MODEL 295HFSDA

Second amplifier kit for dual siren amplifier use.



### Electronic Sirens with 9-Switch Light Control

#### MODEL 295HFSA5

- Park-Kill feature disables the siren tone when the vehicle is in park.
- Low current switching.
- Selectable 100 or 200 watt output.
- Four position slide switch and five push-on/push-off switches and one momentary switch.
- Push-button switches control secondary functions.
- Each slide switch position has a different colored LED "On" indicator.
- Push button switches have a green/red LED indicator for operating status display.
- Choice of 36 press-on legend tabs.
- 5 year warranty on amplifier.
- Low current switching; a four-position, three function slide switch which controls three separate primary warning light functions and can be wired to turn on siren in "full pursuit" mode, plus five push-on/push-off switches and a programmable switch with four choices: momentary, 8 second timer, latch-on/latch-off or flasher mode.
- Size: 3-5/16" (84mm) H x 6" (152mm) W x 8-3/8" (213mm) D.



### Electronic Siren with Scan-Lock™ & 9-Switch Light Control

#### MODEL 295SLSA6

- Park-Kill feature disables the siren tone when the vehicle is in park.
- Selectable 100 or 200 watt output.
- Four position slide switch and five push-on/push-off switches and one momentary switch.
- Push-button switches control secondary functions.
- 17 Scan-Lock siren tones.
- Choice of 36 press-on legend tabs.
- 5 year warranty on amplifier.
- Slide switch and push buttons control nine internal high current solid-state drivers. Each of the six push buttons activate one 10 amp output. Slide switch activates a 20 amp circuit, and can be wired, via a dipswitch, to control a three position program pattern. The sixth position push button may be dipswitch set for momentary, 8 second timer, latch-on/latch-off, or flasher modes. Controls most high current applications such as strobe power supplies, headlight and brakelight flashers.
- Size: 3-5/16" (84mm) H x 6" (152mm) W x 7" (178mm) D.



### Remote Dual Electronic Sirens

#### MODEL 295HFSA7

- Meets SAE J1849 and CA Title XIII specifications.
- Operates in dual or mono modes, two 100-watt speakers.
- Flush mount control head.
- Outputs two independent siren tones, creating rich harmonic dual tone sound.
- External dipswitch selects modes of operation.
- PTT (Push To Talk) switch on microphone overrides all siren functions.
- Removable unidirectional microphone.
- Input polarity protection, output short circuit protection.
- Size: 3-5/16" (84mm) H x 6" (152mm) W x 8-3/8" (213mm) D.



### Self-contained Dual 200 watt Electronic Siren

#### MODEL 295HFSC9

- Removable microphone.
- Choice of mono or stereo sound via switch.
- Full function siren similar to Whelen's 295SLSA1 siren amplifier.
- Dip switch programmable for custom siren tones.
- Includes Hands-Free operation, and radio repeat.
- Size: 2-1/4" (56mm) H x 6" (152mm) W x 6-7/8" (173mm) D.



### 100 watt Electronic Siren

#### MODELS 295SL100 & 295SL101

- Economically priced full function siren, plus radio repeat and public address.
- Operates up to two 100 watt speakers.
- Includes Hands-Free operation and Scan-Lock™ siren tones.
- Self-contained unit for under-dash mounting.
- Backward compatible to the original 295HF100 and WS2100 Series.
- 12 VDC.
- 2 year warranty.
- Size: 2-1/2" (64mm) H x 6" (152mm) W x 5-1/2" (138mm) D.

#### MODEL 295SL100:

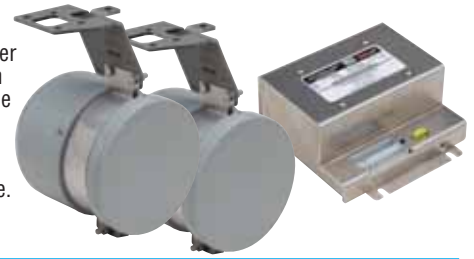
Hard wired microphone standard.

#### MODEL 295SL101:

Removable microphone with a volume control knob.

# WHELEN® Howler™ Low Frequency Siren System

Used as an added layer of warning when used with your 100/200 watt siren amplifier, Howler provides low frequency tones which are able to penetrate vehicles, alerting drivers and pedestrians of your approach. Howler adds an 8 to 60 second penetrating burst for use in heavy traffic, intersections or other high ambient noise situations. Howler is not a replacement to the vehicle's primary siren; but an add-on to any 100-200 watt warning siren such as the Whelen 295SL Series. Select tone duration and tone style via easy Scan-Lock™ feature and LED indicator. (selection of 8 different tone durations: 8-60 seconds maximum) Select from 3 frequency bands. Howler is the only low frequency tone siren that has two external controls that allow the operator to stop (cancel) the siren to receive urgent radio transmission. Works with most siren amplifiers and in any sweeping tone, plus Hi/Low and electronic mechanical tone. Includes two speakers. Choose from a host of vehicle specific mountings. **Model HOWLER**



# WHELEN® Hand Held Siren

**Remote Siren with Hand-Held Controller. User definable functionality!**

Windows® based program allows full custom setup configuration of each of the 12 buttons to control desired light and siren functions. Now you can easily control all light and siren functions remotely using the Hands-Free feature, from this compact hand held controller with built-in microphone. Moisture-resistant controller features twelve rubberized, back-lit push buttons including progressive three position push button lighting control. The unit is microprocessor controlled and rated for up to two 100 watt speakers. Meets SAE Class 1 when used with Whelen 100 watt speakers. **Model HHS200.**



# WHELEN® CenCom™ GOLD Siren Systems



*The evolution of CenCom, the siren and light control system for emergency and law enforcement professionals advances with CenCom Gold.*

## CenCom Gold, Remote Siren and Control Centers

Configuration programming is easier than ever with "drag and drop" feature and more flexibility to configure lights, traffic arrows and siren function controls to your specific needs.

The single Amplifier/Relay Module (A.R.M.) provides ease of access to fuses and connectors without removing the cover. Heavy-duty, two-position Molex® power connector is designed to handle rough treatment without damage or accidental disengagement.

Easily programmable control head includes a four-position slide switch (one 40-amp and two 20-amp outputs) and eighteen programmable backlit push buttons with bright LED On/Off indicators.

- Control your lights, traffic arrow and siren functions from a single keypad.
- Two models to choose from for compatibility with Traffic Advisors™ that do and do not require external controls.
- Easy to operate including true "Hands-Free" On/Off light and siren operation.
- Operates one or two 100-watt speakers.
- Easy to configure using Windows® XP application program (included).
- Configured programs may be extracted, stored and modified for ease of service and reuse.
- Meets or exceeds all applicable SAE, California Title XIII and NFPA requirements with various Whelen speakers.
- A USB port in the A.R.M. provides easy access for programming. (Control head need not be connected for programming).
- A single combination A.R.M. provides ease of access to fuses and connectors without removing the cover.
- Bright red LED indicators are clearly visible, even in bright sun.

- On/Off, momentary, eight-second timer and security double-tap eight-second timer can be programmed through seven switches individually.
- Control panel can be easily surface mounted via Velcro® or U-bracket, standard. Semi-flush mounting trim plate is optional.
- Bright backlit push buttons include 136 standard function labels to choose from.
- State-of-the-art membrane switches provide tactile feedback of activation and are equipped with a solid rubber overlay for moisture resistance.
- Twenty foot power and input/output cabling with connectors, standard.
- Two-year warranty on the system, five-year warranty on amplifier.
- The unidirectional microphone with plug-in connector is standard. Optional 20' microphone extension cable.
- Single 8-conductor, 22-gauge cable connects the control head to the A.R.M. and provides heavy-duty service unlike light weight telephone style cables.
- Size: Control Head: 3-1/2" (89mm) H x 6-7/8" (174mm) W x 1-5/16" (33mm) D. Amplifier: 3" (78mm) H x 8-1/4" (210mm) W x 6-3/4" (171mm) D.

**CCSRN2:** Control head with A.R.M., microphone and a 20' power input/output cable. Includes upgraded switching and programming for more customization and operates Whelen 2-wire Traffic Advisors that do not require external controls.

**CCSRNTA2:** Same as above, but interfaces with Traffic Advisors which do require external control (full Traffic Advisor harness).



Bail bracket mount



Semi flush mount



Dash mount.



Console flush mount.

# WHELEN® Siren Amplifiers

*Economical and waterproof sirens are perfect for volunteer fire personnel, security, escort, undercover vehicles, motorcycles and marine use.*



## ALPHA SERIES

- Economical, four tone, 100 watt siren for applications not requiring public address or radio repeat.
- Self-contained and remote models.
- Meets Class A requirements with most 100 Watt speakers.
- Hands-Free operation.
- Dip switches on rear of amplifier allow easy set-up and configuration to most local requirements.
- Optional switch panels or customer supplied switching may be used with ALPHA12R.

**ALPHA12S:** Self-contained 12 VDC siren. Size: 2-1/2" (64mm) H x 6" (152mm) W x 4-5/8" (117mm) D.

**ALPHA12R:** Remote 12 VDC siren amplifier. Requires separate switches, sold separately. Size: 2-3/8" (60mm) H x 7-1/8" (181mm) W x 4" (102mm) D.

**ALPHA22M:** 100/200 watt remote siren, choose from electronic mechanical tone siren and airhorn; Power Call® (warble and whoop plus wail) via built-in dip switch and airhorn for use with remote switches, purchased separately.

Size: 2-1/2" (64mm) H x 5-7/8" (149mm) W x 6-3/4" (171mm) D.

### Optional switches for ALPHA12R.

**ALPHA1:** Single On/Off, for use with Hands-Free operation.

**ALPHA2:** Single On/Off Hands-Free activation plus momentary switch for air horn.

**ALPHA3:** Tone 1/Off/Tone 2 switch operation plus momentary switch for air horn.

**ALPHA4:** Three switch operation, one On/Off, one Tone 1/Hands-Free/Tone 2, one momentary switch for air horn.

**ALPHA5:** Three position toggle switch, controls three siren tones and other warning lights or device functions. Contacts rated at 30 Amps.



## BETA SERIES

- Economical, four tone, 100 watt remote siren amplifier with Radio Repeat and Public Address.
- Hands-Free operation.
- Meets Class A requirements with most 100 watt speakers.
- PA over-ride in all functions.
- Use with compact BETA1 and BETA2 Control Heads or customer supplied switching.
- Dip switches on rear of amplifier allow easy set-up and configuration to most local requirements without special ordering.

**BETA112R:** Remote 12 VDC siren amplifier with PA and Radio Repeat. Size: 2-3/8" (60mm) H x 7-1/8" (181mm) W x 5-1/2" (140mm) D.

**BETA1:** Control Head with noise cancelling microphone, 15' cable. Size: 2" (51mm) H x 4-1/2" (114mm) W x 2-1/2" (64mm) D.

**BETA2:** Fully encapsulated control head is moisture resistant. Sealed toggle and rotary switches. Removable noise cancelling microphone. 20' cable and connectors. Size: 1-3/4" (44mm) H x 4-1/4" (108mm) W x 2" (51mm) D.

**BETA2BKT:** Optional flush mounting bracket for BETA2 and WPA1 Series control heads.

**BETAMIC:** Remote mic for use with Beta12R, requires customer supplied switches.



## PAH112 and PAPH112

- Delivers 100 watts to a 100 watt siren speaker (purchased separately).
- Housing mounts in trunk, under the seat or other remote location.

**PAH112:** 100 watt airhorn amplifier (electronic amplifier only), 12.8 VDC. Size: 2-1/2" (64mm) H x 5-7/8" (149mm) W x 6-3/4" (171mm) D.

**PAPH112:** 100 watt airhorn amplifier plus public address and microphone, 12.8 VDC. Size: 2-1/2" (64mm) H x 5-7/8" (149mm) W x 6-3/4" (171mm) D.

**PAPEXT15:** Optional 15' extension cable for PAPH112 microphone.



## WPA SERIES

- Water-resistant 100 watt siren amplifier and control heads for motorcycle and marine use.
- Four-tone siren plus Public Address and Radio Repeat.
- Hands-Free operation. WPA Series amplifiers work with WPA Series control heads or customer supplied controls.
- Fully encapsulated, control heads feature sealed toggle and rotary switches and removable noise cancelling microphone.

**WPA112:** 100 watt, 12 VDC, remote amplifier. Weather tight, extruded aluminum housing for rugged environment. Size: 2-7/8" (73mm) H x 3-1/2" (89mm) W x 7-7/8" (200mm) D.

**WPA1:** Control Head with three position toggle switch enables control for siren only functions or combined light and siren operation. Includes handlebar mounting bracket, 7-1/2' cable and connectors. Size: 1-3/4" (44mm) H x 4-1/4" (108mm) W x 2" (51mm) D.

**WPA2:** Control Head with flush mounting bracket, 20' cable and connectors.

Size: Cutout: 1-3/4" (44mm) H x 4-1/4" (108mm) W. Bracket: 2-1/2" (64mm) H x 5-1/4" (133mm) W. Protrusion: 3/4" (19mm). Recess: 4-1/4" (108mm).

**WPA3BM:** Full function control head with waterproof switches and microphone jack. Includes 20' cable and bail mount. Suitable for marine applications. Size: 3-5/8" (92mm) H x 7-1/8" (181mm) W x 4-1/8" (104mm) D.



# WHELEN® Speakers

100 watt high efficiency speakers for underhood, bumper and lightbar mounts, cover you with high impact sound at all levels. 3 year warranty on speaker drivers.



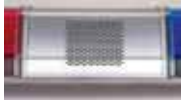
## SA340TS

100 watt high efficiency RMS plastic rectangular speaker horn.  
Size: 5" (127mm) H x 8" (203mm) W x 7" (178mm) D.



## SA340STS

Compact, round aluminum speaker horn. 100 watt, high efficiency driver.  
Size: 5-5/8" (143mm) H x 5-5/8" (143mm) W x 6-13/16" (173mm) D.



## SP123C

Designed for use with Centurion™ Series lightbars. 100 watt speaker is center mounted.



## PROJECT A-FLEX®

### Model PROJECT

Designed for under hood applications. Flexible 60" acoustical tube allows the speaker driver to be mounted virtually any distance from the horn. With 100 watt RMS driver and mounting kit.



## SA40/SA41

Low profile, heavy-duty structural polycarbonate housing and field replaceable 100 watt RMS speaker driver. Easily retrofits to Edge® 9M Series lightbars.

**SA40:** Lo-Pro™ speaker

**SA41:** Lo-Pro speaker kit for customer supplied driver.

SA315P



SA314A



## SA314A, SA314B, SA315P

Projector™ Series high performance, multi-port 100 watt speaker puts high performance traffic clearing warning sound where it counts: down and in front of your vehicle. Properly installed away from your vehicle's interior, this speaker complies with OSHA 1910.95 guidelines regarding "Permissible Noise Exposure." Installs to vehicle's cross member in minutes. All models exceed CA Title XIII, Class A and SAE J1849 requirements. Available in cast aluminum natural finish, black epoxy coated finish or black nylon/composite. Options include universal mounting bracket or vehicle specific mounting brackets. Refer to current price list for details.

Size, SA314A/B: 6-3/16" (156mm) H x 6-7/16" (163mm) W x 3-1/2" (80mm) D.

Size, SA315P: 6-1/2" (165mm) H x 6-1/2" (165mm) W x 2-7/8" (74mm) D.

**SA314A:** Natural cast aluminum housing.

**SA314B:** Black epoxy coated aluminum.

**SA315P:** Black nylon/composite.

# WHELEN® Switch Control Centers

Heavy-duty control centers provide reliable switching control for all types of emergency lighting including lightbars, flashers, power supplies and beacons. Available with or without relays or high current drivers.



## PCCS9NP

Low current switch center for use with Edge® 9M, Ultra Freedom™, LFL Liberty™ and Justice® Series lightbars. Low profile, all extruded aluminum housings. Four position programmable slide switch, five push-on/push-off switches and a programmable switch with four choices (momentary, 8 second timer, latch-on/latch-off or flasher mode). LED "On" indicator. Back-lighted legend windows, 72 standard press-on legend tabs. Adjustable bail bracket.  
Size: 2" (51mm) H x 6-1/8" (156mm) W x 3-5/8" (92mm) D.



## PCCS9R

Connects to most rotating and strobe lightbars without separately mounted relays or relay box. Low profile, all extruded aluminum housings. Nine switch functions with programmable slide lever for three primary warning controls. LED "On" indicator. Six push button switches for secondary functions (5 On/Off and 1 momentary). Back-lighted legend windows, 72 standard press-on legend tabs included. Adjustable bail bracket.  
Size: 2" (51mm) H x 6-1/8" (156mm) W x 7-1/8" (182mm) D.



## PCCHD1

Six heavy-duty 25 amp SPST circuit breaker switches. LED On/Off indicators, back-lighted legends, 72 legend tabs included.

Size: 2-3/8" (60mm) H x 6" (152mm) W x 5-3/8" (137mm) D.

**PCCHD2:** Replaces first switch of the PCCHD1 with a 40 amp circuit for use as master switch or high current applications.

PCC6R



## PCC6R and PCC10

Six or ten lighted SPST switches rated 20 amps peak. Back-lighted legend tabs, 72 standard legend tabs included. Installation is easy with a rear mounted "captive" terminal block.

Size: 2-1/2" (64mm) H x 6" (152mm) W x 4-3/4" (121mm) D.

**PCC6R:** Six switches; one 40 amp switch, five 20 amp switches.

**PCC10:** Ten 20 amp switches.



## Switch Brackets

One, two, three or four PC switch brackets available. Choice of illuminated or non-illuminated switches. Specify switch type described below.

**1SWITCH:** 1 switch bracket with switch of your choice.

**2SWITCH:** 2 switch brackets with switches of your choice.

**3SWITCH:** 3 switch brackets with switches of your choice.

**4SWITCH:** 4 switch brackets with switches of your choice.

**PC-1:** single pole, single throw, illuminated On/Off

**PC-2:** single pole, single throw, momentary On

**PC-3:** single pole, double throw, illuminated, On/Off/On

**PC-4:** single pole, double throw, On/On

**PC-5:** double pole, double throw, On/Off/On

**PC5S:** double pole, double throw, for strobe, Hi/Off/Low

# WHELEN® Justice® & Liberty™ Lightbar Specifications

## JUSTICE® "JC" COMPETITOR™ LIGHTBARS

Model	Voltage	Amp Draw (base model)	Maximum Number of Modules	Type of Corner H x W x L	Dimensions in inches and (mm)
JC4	12.8	2.4 @ 13.6	20	4 Linear-LED® modules with 9 Super-LEDs® per module	2-1/2 (64) x 12 (304) x 44 (112cm)
JC8	12.8	2.4 @ 13.6	24		2-1/2 (64) x 12 (304) x 50-1/8 (127cm)
JC2	12.8	2.4 @ 13.6	24		2-1/2 (64) x 12 (304) x 56-1/4 (143cm)

## JUSTICE "JE" COMPETITOR LIGHTBARS

Model	Voltage	Amp Draw (base model)	Maximum Number of Modules	Type of Corner Modules	Dimensions in inches and (mm) H x W x L
JE4	12.8	1.6 @ 13.6	20	4 Linear-LED® modules with 6 Super-LEDs per module	2-1/2 (64) x 12 (304) x 44 (112cm)
JE8	12.8	1.6 @ 13.6	24		2-1/2 (64) x 12 (304) x 50-1/8 (127cm)
JE2	12.8	1.6 @ 13.6	24		2-1/2 (64) x 12 (304) x 56-1/4 (143cm)

**OPTIONS INCLUDE:** CON3™ Modules • LTR3™ Modules • LIN6™ Modules • Adjustable LR11 Flashing Alley Lights and Take-Downs • LED Brake/Tail/Turn • GTT Opticom™ Emitter • Traffic Advisor™ • Solar Panel

## JUSTICE "JV" WECAN® PROGRAMMABLE LIGHTBARS

Model	Voltage	Amp Draw (base model)	Maximum Number of Modules	Type of Corner Modules	Dimensions in inches and (mm) H x W x L
JV4	12.8	2.4 @ 13.6	22	4 Linear-LED® modules with 9 Super-LEDs per module	2-1/2 (64) x 12 (304) x 44 (112cm)
JV8	12.8	2.4 @ 13.6	26		2-1/2 (64) x 12 (304) x 50-1/8 (127cm)
JV2	12.8	2.4 @ 13.6	26		2-1/2 (64) x 12 (304) x 56-1/4 (143cm)

## JUSTICE "JY" WECAN PROGRAMMABLE LIGHTBARS

Model	Voltage	Amp Draw (base model)	Maximum Number of Modules	Type of Corner Modules	Dimensions in inches and (mm) H x W x L
JY4	12.8	1.6 @ 13.6	22	4 Linear-LED® modules with 6 Super-LEDs per module	2-1/2 (64) x 12 (304) x 44 (112cm)
JY8	12.8	1.6 @ 13.6	26		2-1/2 (64) x 12 (304) x 50-1/8 (127cm)
JY2	12.8	1.6 @ 13.6	26		2-1/2 (64) x 12 (304) x 56-1/4 (143cm)

**OPTIONS INCLUDE:** Adjustable LR11 Super-LED Flashing Take-Downs and Alley Lights • External Alley and Warning pods at end of the lightbar • Adjustable Color Flashing LR11 Super-LEDs in Alley Light Position • Super High Intensity LED Work and Take-Down Lights • CON3™ Modules • LTR3 Modules • LIN6 Modules • LED Brake/Tail/Turn • GTT Opticom™ Emitter • Traffic Advisors • Solar Panel

## LFL LIBERTY™ "SW" WECAN PROGRAMMABLE LIGHTBARS

Model	Voltage	Amp Draw (base model)	Maximum Number of Modules	Type of Corner Modules	Dimensions in inches and (mm) H x W x L
SW4	12.8	3.2 @ 13.6	14 (19 with split TA)	4 extended Linear-LED® modules	2-1/2 (64) x 12 (304) x 43-1/8 (109cm)
SW8	12.8	3.2 @ 13.6	18 (24 with split TA)		2-1/2 (64) x 12 (304) x 48-1/2 (123cm)
SW2	12.8	3.2 @ 13.6	18 (24 with split TA)		2-1/2 (64) x 12 (304) x 53-7/8 (137cm)

**OPTIONS INCLUDE:** Adjustable Color Flashing LR11 Super-LEDs in Alley Light Position • Adjustable LR11 Super-LED Flashing Take-Downs and Alley Lights • Adjustable Dual LR11 Super-LED Flashing Take-Downs Lights • Adjustable Dual MR11 Halogen Flashing Take-Downs • Inboard Super-LED Directional Modules • Halogen Flashing Take-Downs and Alley Lights • Remote Strobe for Center Section • Halogen Work Lights • Adjustable LR11 LED Work Lights • Super High Intensity LED Work Lights • LED Brake/Tail/Turn Lights • Five or Six Lamp Linear-LED Split Traffic Advisor, with or without Control Head • GTT Opticom™ Emitter • Driver Side Cable Exit • Solar Panel

## LFL LIBERTY "SX" SERIES LIGHTBARS

Model	Voltage	Amp Draw (base model)	Maximum Number of Modules	Type of Corner Modules	Dimensions in inches and (mm) H x W x L
SX4	12.8	3.2 @ 13.6	14 (19 with split TA)	4 extended Linear-LED® modules	2-1/2 (64) x 12 (304) x 43-1/8 (109cm)
SX8	12.8	3.2 @ 13.6	18 (24 with split TA)		2-1/2 (64) x 12 (304) x 48-1/2 (123cm)
SX2	12.8	3.2 @ 13.6	18 (24 with split TA)		2-1/2 (64) x 12 (304) x 53-7/8 (137cm)

**OPTIONS INCLUDE:** Adjustable Color Flashing LR11 Super-LEDs in Alley Light Position • LR11 Super-LED Flashing Take-Downs and Alley Lights • Dual LR11 Super-LED Flashing Take-Downs and Alley Lights • Super High Intensity LED Work Lights • Adjustable Dual MR11 Halogen Flashing Take-Downs • LR11 Super-LED Flashing Alley Lights • Inboard Super-LED Directional Modules • Super-LED High Intensity, Flashing Take-Downs • MR11 Flashing Take-Downs and Alley Lights • Halogen Flashing Take-Downs • Remote Strobe for Center Section • GTT Opticom™ Emitter • Five or Six Lamp Linear-LED Traffic Advisor, with or without Control Head • Criss-Cross Flash Pattern of End Linear-LEDs • Solar Panel

# WHELEN® Ultra Freedom Lightbar Specifications

## ULTRA FREEDOM™ II LIGHTBARS

Model	Voltage	Amp Draw (base model)	Maximum Number of Modules	Type of Corner Modules	Dimensions in inches and (mm) H x W x L
FC4	12.8	4.8 @ 13.6	16 (30 split over/under)	4 extended over/under Linear-LED® modules	3-3/4 (95) x 12 (304) x 44-3/8 (113cm)
FC8	12.8	4.8 @ 13.6	18 (34 split over/under)		3-3/4 (95) x 12 (304) x 49-3/4 (126cm)
FC2	12.8	4.8 @ 13.6	18 (34 split over/under)		3-3/4 (95) x 12 (304) x 55-1/8 (140cm)

**OPTIONS INCLUDE:** Inboard Directional Super-LED modules • Two Duplex Split Color Inboard Super-LED modules • Two Dual Super-LED Flashing Take-Down Lights • Two Halogen Flashing Take-Down Lights • Two MR16 Flashing Halogen Take-Down Lights • Two Adjustable MR11 Flashing Alley Lights • Two Adjustable Dual LR11 Super-LED Flashing Alleys • Two Halogen Work Lights • Cruise Light Mode of Corner Linear-LED Module • Five or Six Lamp LED Traffic Advisor • Five or Six Lamp Linear Super-LED Traffic Advisor, with or without Control Head • Five or Six Lamp Duplex Traffic Advisor, with or without Control Head • Drivers Side Cable Exit • Custom Lengths • GTT Opticom® Emitter

## ULTRA FREEDOM "FW" WECAN® PROGRAMMABLE LIGHTBARS

Model	Voltage	Amp Draw (base model)	Maximum Number of Modules	Type of Corner Modules	Dimensions in inches and (mm) H x W x L
FW4	12.8	4.8 @ 13.6	16 (21 with duplex TA)	4 extended Linear-LED® modules	3-3/4 (95) x 12 (304) x 44-3/8 (113cm)
FW8	12.8	4.8 @ 13.6	18 (24 with duplex TA)		3-3/4 (95) x 12 (304) x 49-3/4 (126cm)
FW2	12.8	4.8 @ 13.6	18 (24 with duplex TA)		3-3/4 (95) x 12 (304) x 55-1/8 (140cm)

**OPTIONS INCLUDE:** Inboard Directional Super-LED modules • Two Duplex Split Color Inboard Super-LED modules • Two Dual Super-LED Flashing Take-Down Lights • Two Halogen Flashing Take-Down Lights • Two MR16 Flashing Halogen Take-Down Lights • Two Adjustable MR11 Flashing Alley Lights • Two Dual LR11 Super-LED Flashing Alleys • Two Halogen Work Lights • Two LED Brake/Tail/Turn Lights • Cruise Light Mode of Corner Linear-LED Module • Five or Six Lamp LED Traffic Advisor • Five or Six Lamp Linear Super-LED Traffic Advisor, with or without Control Head • Five or Six Lamp Duplex Traffic Advisor, with or without Control Head • Drivers Side Cable Exit • Custom Lengths • GTT Opticom Emitter

## ULTRA FREEDOM "FV" WECAN PROGRAMMABLE LIGHTBARS

Model	Voltage	Amp Draw (base model)	Maximum Number of Modules	Type of Corner Modules	Dimensions in inches and (mm) H x W x L
FV4	12.8	3.2 @ 13.6	16 (21 with duplex TA)	4 Linear-LED® modules	3-3/4 (95) x 12 (304) x 44-3/8 (113cm)
FV8	12.8	3.2 @ 13.6	18 (24 with duplex TA)		3-3/4 (95) x 12 (304) x 49-3/4 (126cm)
FV2	12.8	3.2 @ 13.6	18 (24 with duplex TA)		3-3/4 (95) x 12 (304) x 55-1/8 (140cm)

**OPTIONS INCLUDE:** Inboard Directional Super-LED modules • Two Super-LED Flashing Take-Down Lights • Two Dual Super-LED Flashing Alley Lights • Two Halogen Flashing Take-Down Lights • Two MR16 Flashing Halogen Take-Down Lights • Two Halogen Flashing Alley Lights • Two MR16 Halogen Flashing Alley Lights • Two Adjustable Dual LR11 Super-LED Flashing Alleys • Two Halogen Work Lights • Two LED Brake/Tail/Turn Lights • Cruise Light Mode of Corner Linear-LED Module • Five or Six Lamp LED Traffic Advisor • Five or Six Lamp Linear Super-LED Traffic Advisor, with or without Control Head • Five or Six Lamp Duplex Traffic Advisor, with or without Control Head • Drivers Side Cable Exit • Custom Lengths • GTT Opticom Emitter

## ULTRA FREEDOM "FX" LIGHTBARS

Model	Voltage	Amp Draw (base model)	Maximum Number of Modules	Type of Corner Modules	Dimensions in inches and (mm) H x W x L
FX4	12.8	4.8 @ 13.6	16 (21 with duplex TA)	4 extended Linear-LED® modules	3-3/4 (95) x 12 (304) x 44-3/8 (113cm)
FX8	12.8	4.8 @ 13.6	18 (24 with duplex TA)		3-3/4 (95) x 12 (304) x 49-3/4 (126cm)
FX2	12.8	4.8 @ 13.6	18 (24 with duplex TA)		3-3/4 (95) x 12 (304) x 55-1/8 (140cm)

**OPTIONS INCLUDE:** Inboard Directional Super-LED modules • Two Super-LED Flashing Take-Down Lights • Two Dual Super-LED Flashing Alley Lights • Two Halogen Flashing Take-Down Lights • Two MR16 Flashing Halogen Take-Down Lights • Two Halogen Flashing Alley Lights • Two MR16 Halogen Flashing Alley Lights • Two Adjustable Dual LR11 Super-LED Flashing Alleys • Two Halogen Work Lights • Cruise Light Mode of Corner Linear-LED Module • Five or Six 400 Series LED Traffic Advisor • Five or Six Lamp LED Traffic Advisor • Five or Six Lamp Linear Super-LED Traffic Advisor, with or without Control Head • Drivers Side Cable Exit • Custom Lengths • GTT Opticom Emitter

## ULTRA FREEDOM™ "FL" SUPER-LED LIGHTBARS

Model	Voltage	Amp Draw (base model)	Maximum Number of Modules	Type of Corner Modules	Dimensions in inches and (mm) H x W x L
FL4**	12.8	1.6 @13.6	9 (front & alley only)	2 front Linear-LED® modules	3-3/4 (95) x 12 (304) x 44-3/8 (113cm)
FL8**	12.8	1.6 @13.6	10 (front & alley only)		3-3/4 (95) x 12 (304) x 49-3/4 (126cm)
FL2**	12.8	1.6 @13.6	10 (front & alley only)		3-3/4 (95) x 12 (304) x 55-1/8 (140cm)

Model	Voltage	Amp Draw (base model)	Maximum Number of Modules	Type of Corner Modules	Dimensions in inches and (mm) H x W x L
FL4****	12.8	3.2 @ 13.6	16 (21 with duplex TA)	4 Linear-LED® modules	3-3/4 (95) x 12 (304) x 44-3/8 (113cm)
FL8****	12.8	3.2 @ 13.6	18 (24 with duplex TA)		3-3/4 (95) x 12 (304) x 49-3/4 (126cm)
FL2****	12.8	3.2 @ 13.6	18 (24 with duplex TA)		3-3/4 (95) x 12 (304) x 55-1/8 (140cm)

**OPTIONS INCLUDE:** Inboard Directional Super-LED modules • Two Dual Super-LED Flashing Take-Down Lights • Two Super-LED Flashing Alley Lights • Two Halogen Flashing Take-Down Lights • Two MR16 Flashing Halogen Take-Down Lights • Two Halogen Flashing Alley Lights • Two MR16 Halogen Flashing Alley Lights • Two Adjustable Dual LR11 Super-LED Flashing Alleys • Two Halogen Work Lights • Four LED Cruise Lights • Cruise Light Mode of Corner Linear-LED Module • Five or Six 400 Series LED Traffic Advisor • Five or Six Lamp LED Traffic Advisor • Five or Six Lamp Linear Super-LED Traffic Advisor", with or without Control Head • Drivers Side Cable Exit • Custom Lengths • GTT Opticom Emitter

# WHELEN® 9M, Centurion™ & Outer Edge® Lightbar Specifications

## EDGE® 9M SERIES STROBE LIGHTBARS

Model	Voltage	Amp Draw (basic model)	Number of Strobe Power Supplies	Number of Strobe Modules	Maximum Number of Modules	Type of Corner Modules	Dimensions in inches and (mm) H x W x L
9M144000	12.8	6	1	4	16 (21 with duplex TA)	4 Linear strobe modules	3-3/4 (95) x 10 (254) x 44-3/8 (113cm)
9M148000	12.8	6	1	4	18 (24 with duplex TA)		3-3/4 (95) x 10 (254) x 49-3/4 (126cm)
9M142000	12.8	6	1	4	18 (24 with duplex TA)		3-3/4 (95) x 10 (254) x 55 (140cm)
9M14400F (front facing)	12.8	6	1	4	9 (front & alley only)		3-3/4 (95) x 10 (254) x 44-3/8 (113cm)
9M14800F (front facing)	12.8	6	1	4	10 (front & alley only)		3-3/4 (95) x 10 (254) x 49-3/4 (126cm)
9M14200F (front facing)	12.8	6	1	4	10 (front & alley only)		3-3/4 (95) x 10 (254) x 55 (140cm)
9M264000	12.8	12	2	6	16 (21 with duplex TA)		3-3/4 (95) x 10 (254) x 44-3/8 (113cm)
9M268000	12.8	12	2	6	18 (24 with duplex TA)		3-3/4 (95) x 10 (254) x 49-3/4 (126cm)
9M262000	12.8	12	2	6	18 (24 with duplex TA)		3-3/4 (95) x 10 (254) x 55 (140cm)
9M284000	12.8	12	2	8	16 (21 with duplex TA)		3-3/4 (95) x 10 (254) x 44-3/8 (113cm)
9M288000	12.8	12	2	8	18 (24 with duplex TA)		3-3/4 (95) x 10 (254) x 49-3/4 (126cm)
9M282000	12.8	12	2	8	18 (24 with duplex TA)		3-3/4 (95) x 10 (254) x 55 (140cm)
9M304000	12.8	18	3	10	16 (21 with duplex TA)		3-3/4 (95) x 10 (254) x 44-3/8 (113cm)
9M308000	12.8	18	3	10	18 (24 with duplex TA)		3-3/4 (95) x 10 (254) x 49-3/4 (126cm)
9M302000	12.8	18	3	10	18 (24 with duplex TA)		3-3/4 (95) x 10 (254) x 55 (140cm)
9M324000	12.8	18	3	12	16 (21 with duplex TA)		3-3/4 (95) x 10 (254) x 44-3/8 (113cm)5
9M328000	12.8	18	3	12	18 (24 with duplex TA)		3-3/4 (95) x 10 (254) x 49-3/4 (126cm)
9M322000	12.8	18	3	12	18 (24 with duplex TA)		3-3/4 (95) x 10 (254) x 55 (140cm)
9MMEDGE (Mini)	12.8	6	1	4	10		3-3/4 (95) x 10 (254) x 28-1/2 (65cm)

**OPTIONS INCLUDE:** 15 foot 5-C cable • Drivers Side Cable Exit • Lo-Pro™ Speaker • Halogen and Duplex Halogen Alley Lights • Halogen and Duplex Halogen Take-down Lights • LED and Duplex LED Flashers • LED and Duplex LED Brake/Tail/Turn Lights • Piercer II™ • LED Cruise Lights • GTT Opticom™ Emitter • 5 or 6 Lamp Halogen or Duplex Halogen Traffic Advisors • 5 or 6 Lamp LED or Duplex Halogen Traffic Advisors • 5 or 6 Lamp Strobe or Duplex Strobe Traffic Advisors • Half Color Filters • Corner Color Filters • Custom Lengths

## CENTURION™ HALOGEN LIGHTBARS

Model	No. of Rotators (std.)	No. of Strobes (std.)	Voltage (VDC)	Current Draw (amps)	Dimensions in inches and (mm) H x W x L
C2008000	2	-	12.8	8	6-1/2 (165) x 12 (304) x 48 (122cm)
C2002000	2	-	12.8	8	6-1/2 (165) x 12 (304) x 52 (132cm)
C2000000	2	-	12.8	8	6-1/2 (165) x 12 (304) x 60 (152cm)
C2007000	2	-	12.8	8	6-1/2 (165) x 12 (304) x 72 (183cm)
C4008000	4	-	12.8	16	6-1/2 (165) x 12 (304) x 48 (122cm)
C4002000	4	-	12.8	16	6-1/2 (165) x 12 (304) x 52 (132cm)
C4000000	4	-	12.8	16	6-1/2 (165) x 12 (304) x 60 (152cm)
C4007000	4	-	12.8	16	6-1/2 (165) x 12 (304) x 72 (183cm)

**OPTIONS INCLUDE:** 135 or 175 RPM Rotators • Twin Duplex Alley Lights • Twin Duplex Take-Down Lights • Steady Identification Lights • Twin Duplex Front and Rear Flashers • Color filters • 6" x 4" Rear Halogen Work Lights • Duplex LED Brake/Tail/Turn • 6 or 8 Lamp Duplex Traffic Advisor™ • 100 Watt Center Mounted Speaker • Customer Installed Kits • GTT Opticom Emitter

## OUTER EDGE® LIGHTBARS

Model	Function	No of Lamps	VDC	Amp Draw per lighthouse	Dimensions
OE13UR8	Warning or Traffic Advisor	8	12	750 mA max 300 mA average	5-5/8" (143mm) H x 3-3/4" (92mm) D x 19-1/4" (489mm) L, each
OE13UR8T	Traffic Advisor 2 end flashers				

# WHELEN® Inner-Edge® Lightbar Specifications

Models and Descriptions	Ford Crown Victoria 2005-1/2 - 2009	Ford Expedition 2006-2009	Ford Explorer 2007-2009	Ford F150 2006-2008	Ford F250/F350 2008-2009	Chevy Suburban 2007-2009	Chevy Impala 2005-2009	Chevy Tahoe 2007-2009	Chevy Silverado 2007-2009	Dodge Charger 2006-2009	Dodge Magnum 2005-2008	Dodge Durango 2007-2009	Chrysler Aspen 2007-2009
<b>Forward Facing Upper</b>													
<b>Low Profile 3-LED Series</b>													
12 lamp, 1 piece, 2 Super-LED® take-downs	I09UFX	-	-	-	-	-	-	-	-	-	-	-	-
10 lamp, 1 piece, 2 Super-LED take-downs	I09UFZ	-	-	-	-	-	-	-	-	-	-	-	-
10 lamp, 2 piece	I10UFZ	I08UFZ	I14UFZ	I11UFZ	I17UFZ	I13UFZ	I06UFZ	I13UFZ	I13UFZ	I07UFZ	I07UFZ	I16UFZ	I16UFZ
8 lamp, 2 piece, 2 Super-LED take-downs	I10UF8	I08UF8	I14UF8	I11UF8	I17UF8	I13UF8	I06UF8	I13UF8	I13UF8	I07UF8	I07UF8	I16UF8	I16UF8
4 lamp, 1 piece, 1 Super-LED take-down, passenger side	I10UF4P	I08UF4P	I14UF4P	I11UF4P	I17UF4P	I13UF4P	I06UF4P	I13UF4P	I13UF4P	I07UF4P	I07UF4P	I16UF4P	I16UF4P
5 lamp, 1 piece, passenger side	I10UF5P	I08UF5P	I14UF5P	I11UF5P	I17UF5P	I13UF5P	I06UF5P	I13UF5P	I13UF5P	I07UF5P	I07UF5P	I16UF5P	I16UF5P
<b>Three Light Linear-LED® Series</b>													
3 single color	I02UF***	-	-	-	-	-	-	-	-	-	-	-	-
2 single color, 1 center red/blue split	I02UF*J*	-	-	-	-	-	-	-	-	-	-	-	-
2 single color, 1 center clear strobe (remote power supply required)	I02UF*S*	-	-	-	-	-	-	-	-	-	-	-	-
2 single color, 2 center MR8 take-downs	I02UF*8*	-	-	-	-	-	-	-	-	-	-	-	-
1 single color, one California steady red, 2 MR8 take-downs	I02UF8*	-	-	-	-	-	-	-	-	-	-	-	-
<b>Rear Facing Upper</b>													
<b>TIR3™ Series</b>													
10 lamp, programmable for warning or Traffic Advisor™	I02URZ	-	-	-	-	-	-	-	-	-	-	-	-
6 lamp Traffic Advisor with 4 end flashers (10 lamps total)	I02URZ6	-	-	-	-	-	-	-	-	-	-	-	-
8 lamp Traffic Advisor with 2 end flashers (10 lamps total)	I02URZ8	-	-	-	-	-	-	-	-	-	-	-	-
8 lamp, programmable for warning or Traffic Advisor	I02UR8	-	-	-	-	-	-	-	-	-	-	-	-
6 lamp Traffic Advisor with 2 end flashers (8 lamps total)	I02UR86	-	-	-	-	-	-	-	-	-	-	-	-
<b>Linear-LED Series</b>													
8 lamp, programmable for warning or Traffic Advisor	I02UR8L	-	-	-	-	-	-	-	-	-	-	-	-
6 lamp Traffic Advisor with 2 end flashers (8 lamps total)	I02UR8LT	-	-	-	-	-	-	-	-	-	-	-	-
<b>Rear Facing Lower</b>													
<b>Linear-LED Series</b>													
8 lamp, programmable for warning or Traffic Advisor	I02LR8L	-	-	-	-	-	106LR8L	-	-	I07LR8L	-	-	-
6 lamp Traffic Advisor with 2 end flashers (8 lamps total)	I02LR8LT	-	-	-	-	-	106LR8LT	-	-	I07LR8LT	-	-	-
6 lamp, programmable for warning or Traffic Advisor	I02LR6L	-	-	-	-	-	106LR6L	-	-	I07LR6L	-	-	-

# WHELEN® Mini Lightbar Specifications

Model	Technology	Mount	Light Source	Amp Draw	FPM/Patterns	VDC	Base	Dome/Lens
<b>Responder® Cadet™</b>								
CR212	halogen	magnetic/permanent	27 watt snap-in bulb	3 @13.5	110/180 FPM	12	polycarbonate	color outer dome
<b>Guardian™ Series</b>								
G1P*	halogen	permanent	55 watt H1 bulb (12 volt version)	9	540 FPM	12 (24 available upon request)	polycarbonate	color outer dome
G1M*		magnetic						
G1V*		magnetic/suction						
G2P*		permanent			700 FPM			
G2M*		magnetic						
G2V*		magnetic/suction						
G5P*	strobe	permanent	2 independent beacons	4.6	288 FPM plus 4 patterns	12/24	polycarbonate	color outer dome
G5M*		magnetic						
G5V*		magnetic/suction						
G7P*		permanent	2 alternating beacons	3	480			
G7M*		magnetic						
G7V*		magnetic/suction						
<b>Responder LP</b>								
R1LPP*	CON3™	permanent	6 CON3 modules	3 peak 1.2 average	30 Scan-Lock™ flash patterns including 4 simulated rotating patterns (permanent mount only)	12	polycarbonate	color outer dome
R1LPM*		magnetic						
R1LPV*		magnetic/suction						
R1LPHP*		permanent						
R1LPHM*		magnetic						
R1LPHV*		magnetic/suction						
R2LPP*	LIN6™ Super-LED®	permanent	6 LIN6 modules	6 peak 2.4 average	ActionScan™ default for magnetic mount only	12	polycarbonate	color outer dome
R2LPM*		magnetic						
R2LPV*		magnetic/suction						
R2LPHP*		permanent						
R2LPHM*		magnetic						
R2LPHV*		magnetic/suction						
<b>Responder HD</b>								
R2HDP*	halogen	permanent	50 watt snap-in bulb	9	540 FPM	12 (24 optional)	aluminum	color outer dome
R2HDM*		magnetic						
R10HDP*	Super-LED	permanent	6 duplex 400 Series Linear-LED® modules	9.0 peak 3.6 average	12 Scan-Lock flash patterns	12	aluminum	color outer dome
R10HDM*		magnetic						
R10HDV*		magnetic/suction						
<b>Responder DX</b>								
R6DXM*	strobe	magnetic	two VP231 beacons	4.2 / 2.1	480 FPM	12 / 24	polycarbonate	color outer dome
R6DXP*		permanent						clear outer dome
R6DXMC**		magnetic						color inner beacons
R6DXPC**		permanent						color inner beacons
<b>9M Series</b>								
9MMEDGE P	strobe	permanent	Linear Strobe	6	10 optional Scan-Lock (perm mount)	12	extruded aluminum	color lenses
9MMEDGE M		magnetic						
<b>Liberty™</b>								
LT****P	Super-LED	permanent	Linear-LED	3 peak 1.2 average	14 Scan-Lock flash patterns	12	extruded aluminum	clear lenses
LT****M		magnetic						
<b>Freedom™</b>								
FT8****P	Super-LED	permanent	Dual Linear-LED	3 peak 1.2 average	14 Scan-Lock flash patterns	12	extruded aluminum	clear lenses
FT8****M		magnetic						
FT8****F		Perm/ front facing						
<b>Justice®</b>								
MJY****P	Super-LED	permanent	Linear-LED	2 peak .8 average	95 Scan-Lock flash patterns	12	polycarbonate on extruded aluminum	clear lenses
MJY****M		magnetic						
MJY****V		magnetic/suction						

# WHELEN<sup>®</sup>

ENGINEERING COMPANY, INC.

51 Winthrop Road, Chester, CT 06412  
860-526-9504 • fax 860-526-4078  
www.whelen.com

*Engineers for the Emergency Warning Industry*

DISTRIBUTED BY:



Whelen Engineering Co., Inc. designs and manufactures audible and visual signalling products that are used for automotive warning, public and industrial warning and general aviation. Using the latest technology, Whelen leads the industry in optics, acoustics, electronics and microprocessor technology. Our products are made in America and designed to provide maximum warning protection for the vehicle, its occupants and the public.

Whelen Engineering reserves the right to upgrade and improve products without notice.  
NASCAR<sup>®</sup> is a registered trademark of the National Association for Stock Car Auto Racing, Inc.  
© 2009 Whelen Engineering Company, Inc. Printed in the U.S.A. Code 11402F-0509

*Whelen Products are  
designed & manufactured  
in the U.S.A.*